

# Re-Composed for Ensemble Three GAMMA

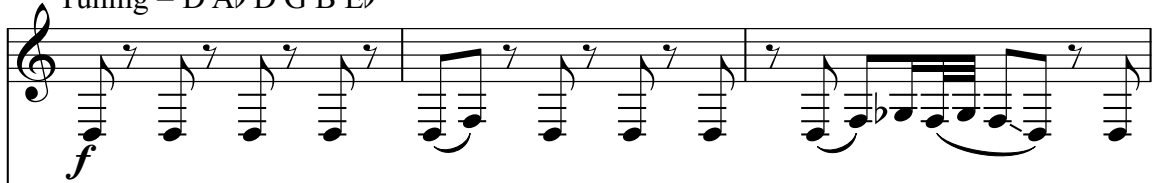
for Trumpet, Trombone, and Electric Guitar

$\text{♩} = 126$

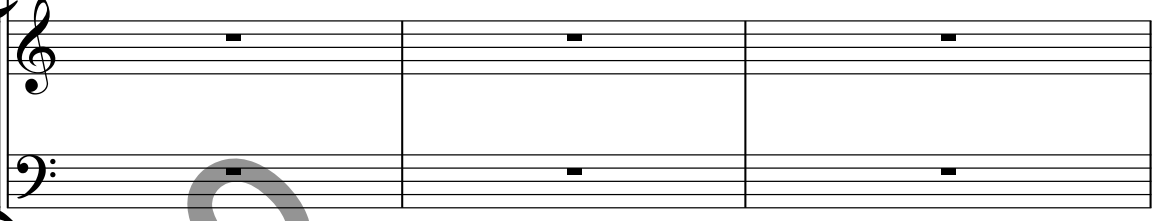
Tuning = D A $\flat$  D G B E $\flat$

Melody Eötvös (2022)

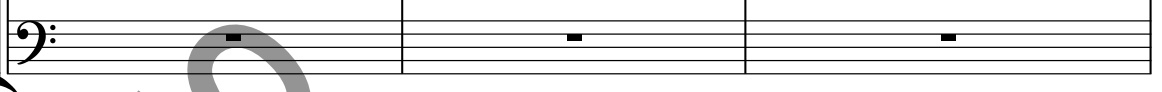
Electric Guitar



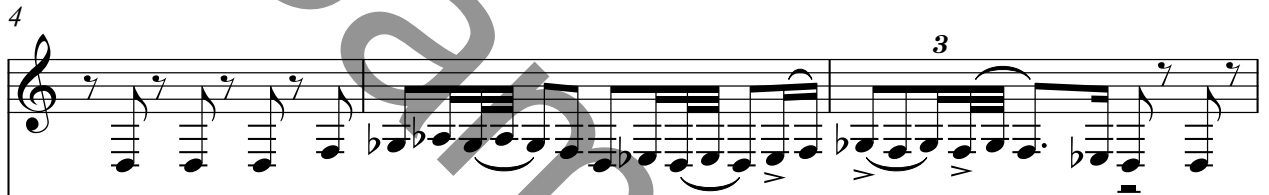
Trumpet in C



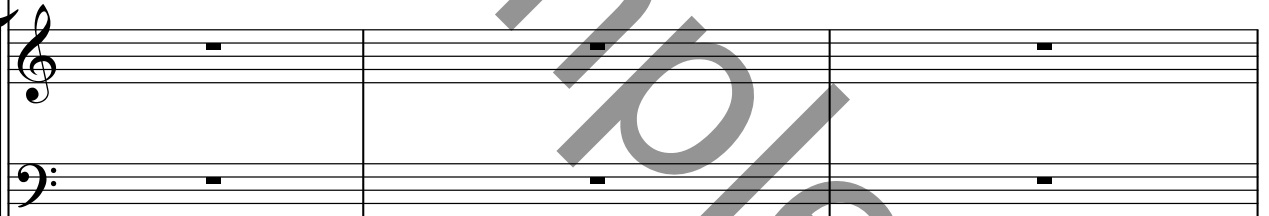
Trombone



E. Gtr.



C Tpt.



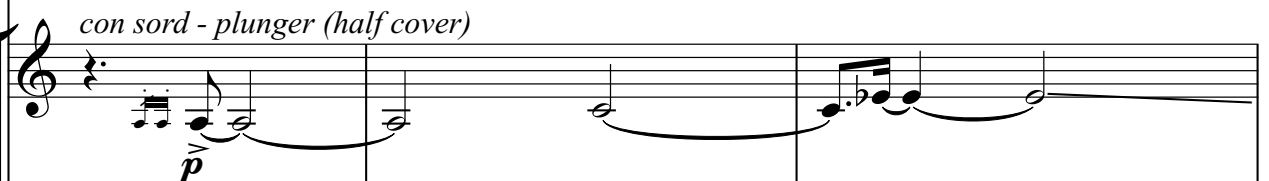
Tbn.



E. Gtr.



C Tpt.



Tbn.



10

E. Gtr.

C Tpt.

Tbn.

wah-wah

ppp

wah-wah

ppp

13

E. Gtr.

C Tpt.

Tbn.

con sord - harmon (stem in)

p

con sord - harmon (stem in)

p

15

E. Gtr.

C Tpt.

Tbn.

⑥

66 **Measured**

E. Gtr.

C Tpt.

Tbn.

*With freedom*

*f* *mf* *mp*

*as evenly as possible*

70

E. Gtr.

C Tpt.

Tbn.

*hammer/pull of only - no strike ord.*

*p* *mf*

74 ♩ = 140

E. Gtr.

C Tpt.

Tbn.

*(con sord.)*

*p*

*con sord - straight*

*p*

80

E. Gtr.

C Tpt.

Tbn.

*f* *mf* *mp* *mf* *p* *mf* *p*

87

E. Gtr.

C Tpt.

Tbn.

*f* *f* *f*

93

E. Gtr.

C Tpt.

Tbn.

*poco rit.* *hammer/pull of only - no strike ord.* *poco rit.*

166

E. Gtr.

C Tpt.

Tbn.

7/8

3/4

169

E. Gtr.

C Tpt.

Tbn.

173

E. Gtr.

C Tpt.

Tbn.